

4.4.2.1 How to Use the Non-Functional Requirements Boilerplate

[Return to Non-Functional Requirements](#)

To use either the Microsoft Excel or Google Sheets workbook to support a Trade Study, click on one of the links below. To fill out the workbook, go to each individual sheet in the workbook and evaluate the [requirement](#) using a rating of 1-5: 1 for poor and 5 for excellent. The sheet will then calculate the average, total score, and number of samples that were used to calculate both previous values for this sheet. In the comments section you can add additional information about that specific topic. The Master sheet includes links back to the DIDO Wiki to describe each of the [non-functional requirements](#) (e.g. [Portability](#)). Each of the sheets associated with a specific non-functional requirement (e.g, [Portability](#)) includes links back to the DIDO RA Wiki for more information about whichever sub-requirement (e.g., [Fault Tolerance](#)) is needed and being rated.

Using Google Sheets

[Return to Top](#)

If you would like to use the Google Sheets Workbook for the DIDO RA...

1. Go to the Google Sheets link that has the template.
 - [Google Spreadsheet](#).
2. Click on **File**

Click on "File"

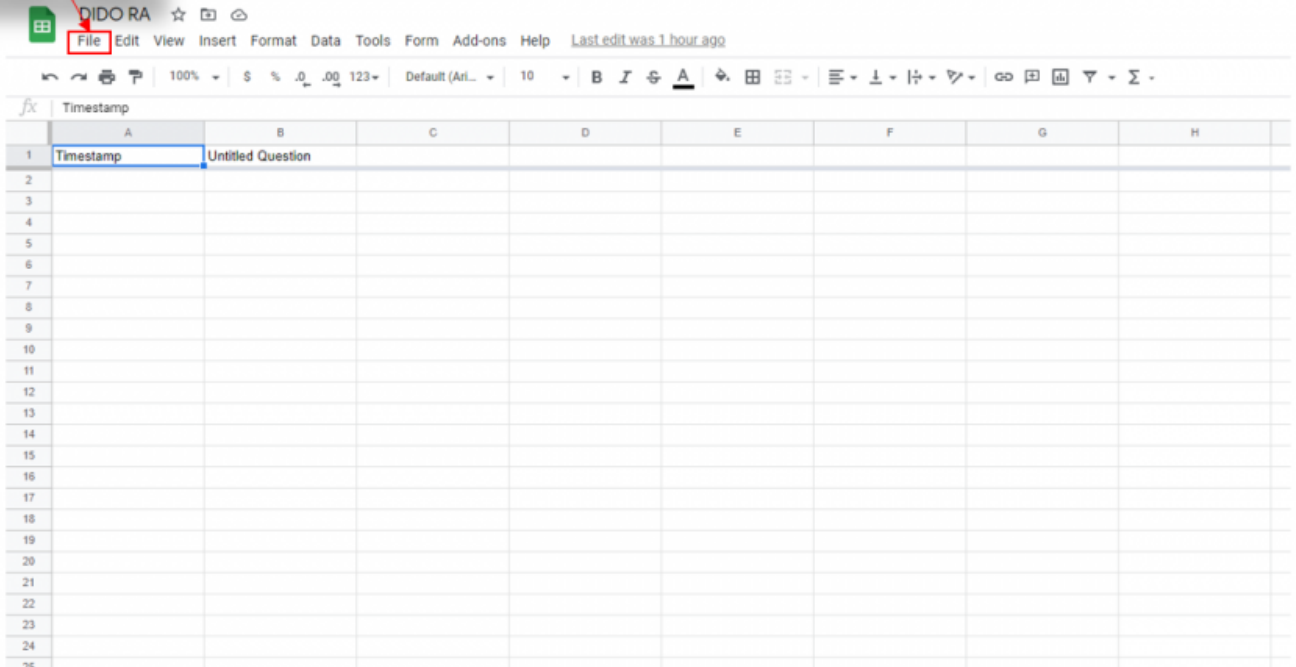


Figure 1:

3. Click on **Make Copy**

Click on "Make a Copy"

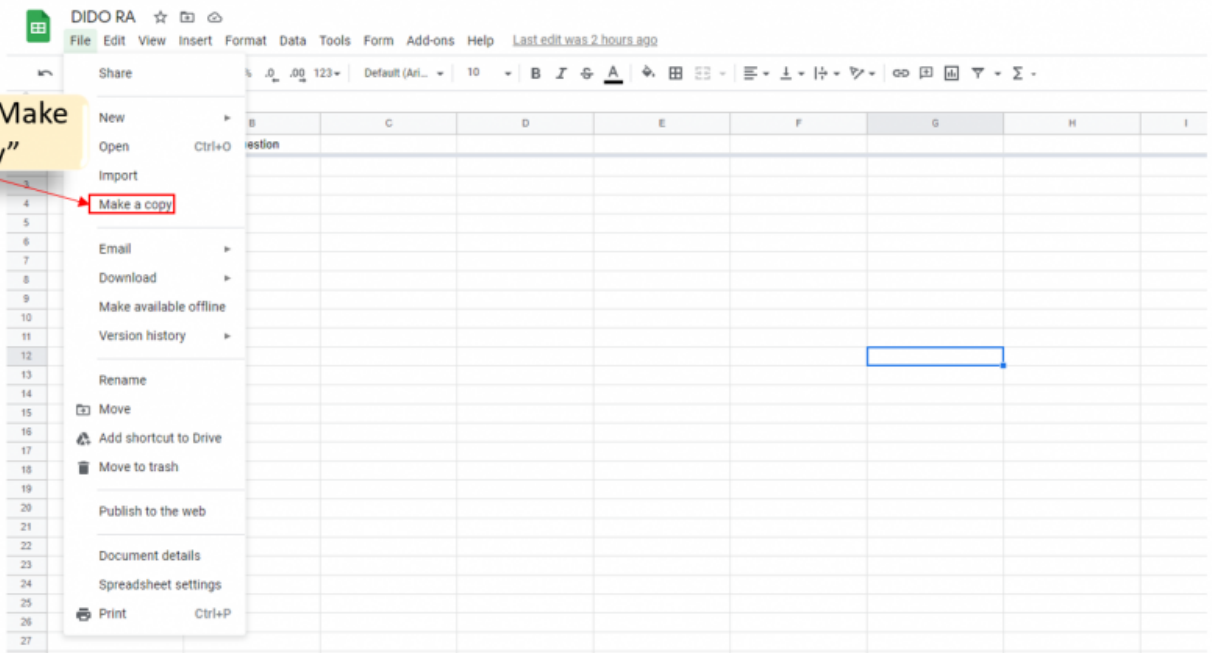


Figure 2:

4. A window will pop up. You must rename the workbook to a different name, and then save this copy to your Google Drive. That way you can immediately start working on your own version with your team.

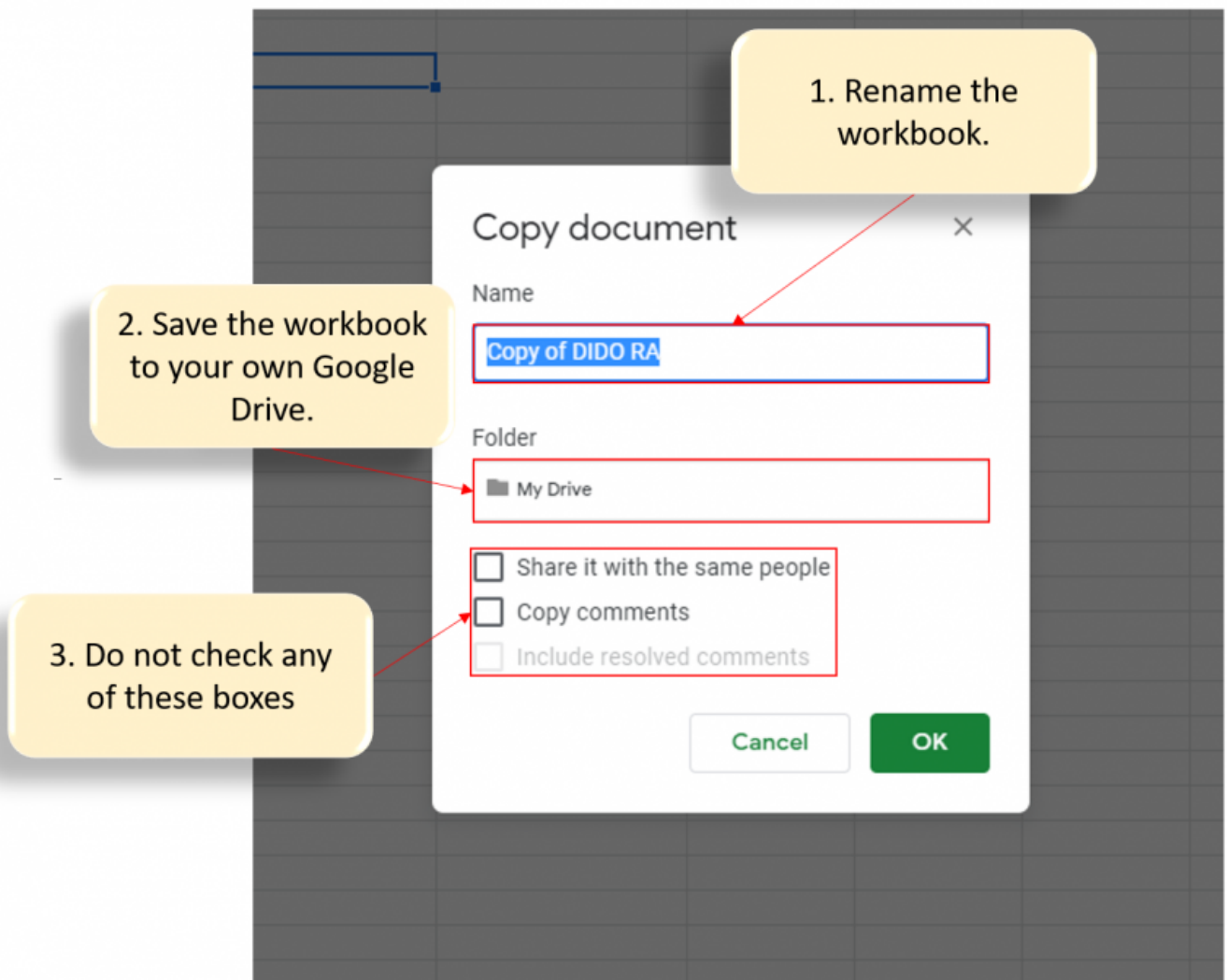


Figure 3:

NOTE: It is **not** recommended to download the Google Sheet as a Microsoft Excel sheet. Use the Microsoft directions below.

Using Microsoft Excel

[Return to Top](#)

ATTENTION:

It is **not** recommended to use the Microsoft Excel method for the following reasons...

- Limited ability to place data inside a cell
- Only one link per cell
- Row height and Column width limit is restrictive
- Limited ability to format cells.

If you still wish to proceed, click on the link below to download a copy of the Microsoft version of the workbook

- [Microsoft Excel Workbook](#)

From: <https://www.omgwiki.org/dido/> - **DIDO Wiki**

Permanent link: https://www.omgwiki.org/dido/doku.php?id=dido:public:ra:1.4_req:3_assessment:2_nonfunctional:howto

Last update: **2021/08/17 12:22**

